

**REGIONAL SPECIALISED METEOROLOGICAL CENTRE-TROPICAL CYCLONES, NEW DELHI
TROPICAL WEATHER OUTLOOK**

DEMS-RSMC SPECIAL TROPICAL CYCLONES NEW DELHI DATED 27.11.2021

TROPICAL WEATHER OUTLOOK FOR NORTH INDIAN OCEAN (THE BAY OF BENGAL AND ARABIAN SEA) VALID FOR NEXT 120 HOURS ISSUED AT 0600 UTC OF 27.11.2021 BASED ON 0300 UTC OF 27.11.2021.

BAY OF BENGAL:

A LOW PRESSURE AREA IS LIKELY TO FORM OVER SOUTH ANDAMAN SEA AROUND 29TH NOVEMBER, 2021. IT IS LIKELY TO BECOME MORE MARKED AND MOVE WEST-NORTHWESTWARDS DURING SUBSEQUENT 48 HOURS.

SCATTERED TO BROKEN LOW AND MEDIUM CLOUDS WITH EMBEDDED INTENSE TO VERY INTENSE CONVECTION LAY OVER OVER CENTRAL BAY OF BENGAL ADJOINING SOUTH BAY OF BENGAL AND SOUTH ANDAMAN SEA.

PROBABILITY OF CYCLOGENESIS (FORMATION OF DEPRESSION) DURING NEXT 120 HRS:

24 HOURS	24-48 HOURS	48-72 HOURS	72-96 HOURS	96-120 HOURS
NIL	NIL	NIL	NIL	LOW

ARABIAN SEA:

SCATTERED TO BROKEN LOW AND MEDIUM CLOUDS WITH EMBEDDED INTENSE TO VERY INTENSE CONVECTION LAY OVER SOUTH ARABIAN SEA COMORIN.

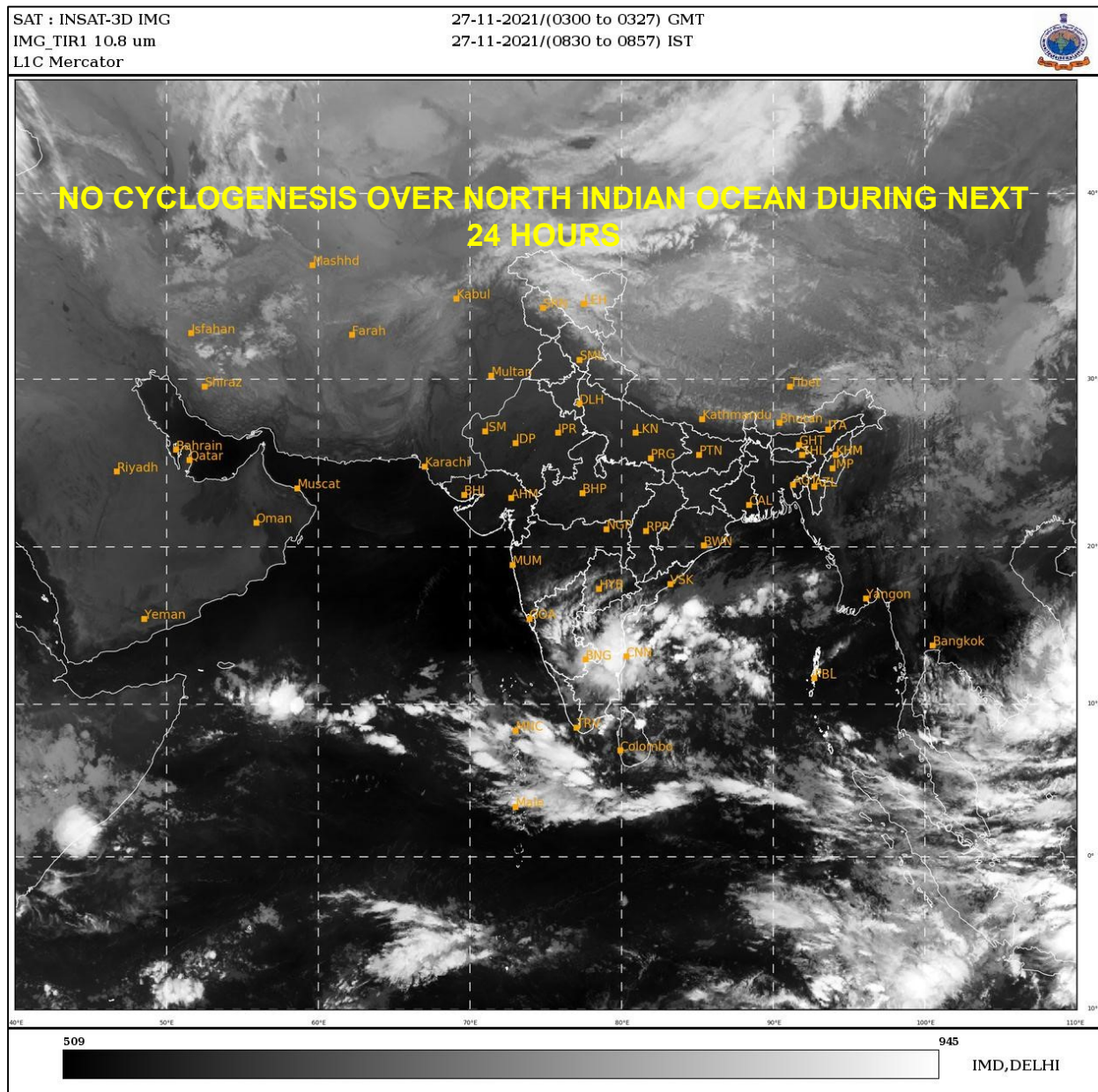
PROBABILITY OF CYCLOGENESIS (FORMATION OF DEPRESSION) DURING NEXT 120 HRS:

24 HOURS	24-48 HOURS	48-72 HOURS	72-96 HOURS	96-120 HOURS
NIL	NIL	NIL	NIL	NIL

REMARKS:

THE SEA SURFACE TEMPERATURE IS 29-31°C OVER ENTIRE BOB. TROPICAL CYCLONE HEAT POTENTIAL IS >100 KJ/CM² OVER EASTERN EQUATORIAL INDIAN OCEAN AND ADJOINING SOUTH ANDAMAN SEA & SOUTHEAST BAY OF BENGAL (BOB). IT IS 80-100 OVER MAJOR PARTS OF CENTRAL & NORTH BOB. THE MADDEN JULIAN OSCILLATION INDEX IS CURRENTLY IN PHASE 4 WITH AMPLITUDE CLOSE TO 1. IT WILL CONTINUE IN SAME PHASE FOR NEXT 2 DAYS. THEREAFTER, IT WILL MOVE TO PHASE 5 WITH AMPLITUDE REMAINING CLOSE TO 1 FOR SUBSEQUENT 3 DAYS AND FURTHER PROPAGATE EASTWARDS INTO PHASE 6 FROM 1ST DECEMBER ONWARDS. VARIOUS ENVIRONMENTAL CONDITIONS LIKE VERTICAL WIND SHEAR (05-15), LOW LEVEL VORTICITY & CONVERGENCE AND UPPER LEVEL DIVERGENCE ARE ALSO FAVOURABLE FOR CYCLOGENESIS OVER ANDAMAN SEA REGION. THUS, CURRENT SEA & ENVIRONMENTAL CONDITIONS ARE CONDUCIVE FOR CYCLOGENESIS OVER THE ANDAMAN SEA REGION.

MAJORITY OF THE MODELS INDICATE EMERGENCE OF A LOW PRESSURE SYSTEM FROM GULF OF THAILAND OVER SOUTH ANDAMAN SEA AROUND 29TH WITH INITIAL WEST-NORTHWESTWARD MOVEMENT AND INTENSIFICATION INTO DEPRESSION AND CYCLONIC STORM SUBSEQUENTLY. HOWEVER, THERE IS LARGE DIVERGENCE AMONG VARIOUS MODELS W.R.T. DATE OF FORMATION OF DEPRESSION AND DIRECTION OF MOVEMENT. GFS GROUP OF MODELS IS INDICATING FORMATION OF DEPRESSION AROUND 30TH NOVEMBER AND NCUM GROUP & ECMWF ARE INDICATING FORMATION OF DEPRESSION AROUND 2ND DECEMBER. HENCE, LOW PROBABILITY IS ASSIGNED TO FORMATION OF DEPRESSION OVER BOB ON DAY-5 (AROUND 1ST DECEMBER).



PROBABILITY OF CYCLOGENESIS (FORMATION OF DEPRESSION):NIL: 0%, LOW: 1-25%, FAIR: 26-50%, MODERATE: 51-75% AND HIGH: 76-100%
 This is a guidance Bulletin for the WMO/ESCAP Panel Member countries,. Please visit respective National websites for Country specific Bulletins